



67 Bathurst Street  
PO Box 712 Grahamstown 6139  
Tel: (046) 622 8831 Fax: (046) 622 8832  
Email: info@raphaelcentre.co.za  
Website: www.raphaelcentre.co.za  
027-238-NPO PBO 930 016 816



## REPORT

for

### CYCLE TO ... and the EMTHONJENI TRUST

#### RAPHAEL (Sakhingomso) and LITHALETHU PRE-SCHOOLS

#### THIRD and FOURTH TERM

September, October, November, December 2014

Submitted by: Nondumiso Pinyana and Mary Humphreys  
Financial report by: Charlene Heynes

26 January 2015

#### INTRODUCTION

2014 was busy, challenging and rewarding. New route that we have adopted, Asset Based Community-driven Development (ABCD) has added load, but all of the change was for best and has been worth it. Since 2014 we had new strategic planning that promotes starting with what you have and add on what we know. The Raphael Centre saw it as something that could build and develop our communities. We have introduction training with practitioners and parents of the preschools about using the assets they have. It has been a struggle as it starts with paradigm shift, a new way of thinking and of viewing the world. But it has been rewarding and we are seeing many changes which are reported below.

#### OVERVIEW OF PRE-SCHOOLS

##### Raphael (Sakhingomso) Pre-school

Sakhingomso pre-school has now used the available assets to build temporary play grounds for the pre-school children. Outdoor play areas and 'toys' have been made using tyres and other upcycled materials. With the assistance and input of Feeding the Self and our Community Corrections volunteers, the garden is doing well.



For a summary and overview of interactions with the pre-school, please see attachments:

- i) Information update
- ii) Example of typical consultation session
- iii) Example of meeting
- iv) Meeting with School Governing Board

Please also view Dropbox address:

[https://www.dropbox.com/sh/vash32r17ejwprt/AADeY1Fnx52kpT\\_uwuZsi2msa?dl=0](https://www.dropbox.com/sh/vash32r17ejwprt/AADeY1Fnx52kpT_uwuZsi2msa?dl=0)

Raphael (Sakhingomso Pre-school Year End function photos. Short play and short graduation video still to be sent.)

### **Lithalethu Day Care**

Lithalethu has taken on ABCD thinking wholeheartedly. Their thinking is asset based not needs based. They are willing to do anything that will make the pre-school successful. They trying to get permanent place to run the preschool as it is a struggle for them to work on their dreams where they are at the moment. They wish to have their own garden and playground which is not possible at their current location. They have begun collecting tyres and pellets for the playground.

Lithalethu is organizing Christmas party for the kids and they came to ask donation from each staff member. The Raphael Centre has donated funds for the hire of a jumping castle for the day.

The Raphael Centre also assisted Lithalethu with their business plans and proposal to the Department of Social Development. We have also assisted them to register as an NPO so that they are eligible for funds. Registration is still in process. Lithalethu has become a member of the Eastern Cape NGO Coalition which makes them part of a bigger network in the Eastern Cape.

Please see below: Partnership and Sustainability for additional information on the way forward for Lithalethu Day Care.

### **Sibanye Special Needs School and Zolani Pre-School**

Sibanye is a fairly new day care started by local community members to care for children with special needs. There is no place in Grahamstown that caters for children with special needs. This means that mothers of special needs children are forced to stay at home to care for their child thus prevented from earning a living. The Siyanye School enables parents to work while their children are safe. At present, the school has five children: one girl of six years, three girls age eight and one boy aged eight. The School's motto is: "Don't laugh at us, laugh with us".

We assisted Sibanye with donations of fruit, kindly provided by a community member. We have also attended small fundraising events.

We have assisted Zolani by connecting them with the Grahamstown Goodwill Gang who was able to collect and donate toys and materials to the school.

We helped Pumpkin Patch and Sibanye with their business plans for the Department of Social



Development.

Children and staff at Sibanye.

### Sibanye Special Day Care Centre



*Sisankhe ngothando nekamva labantwana*

Sibanye Special Day Care Centre  
c/o Samuel  
Ntlebi Primary School  
Daniels Street, Joza  
Grahamstown, 6139

Mary Humphreys  
Director  
Raphael Centre  
67 Bathurst Street  
Grahamstown  
6140

Friday 24th October 2014

Dear Mary

Re: Thank you for donations

On behalf of the Sibanye Special Day Care Centre in Joza, I would like to thank you and your colleagues at Raphael Centre for the wonderful donation "treats" which we received from you on Tuesday.

The Sibanye staff and the children want you to know that it is greatly appreciated. The kids had a really fun day on Wednesday and Thursday. They loved the treats and their enjoyment was something very special to see and share in.

Again, thank you kindly for donation. Please know it is greatly appreciated.

We look forward to increasing cooperation between our organisations.

Kind Regards

Nomalungisa Maloni

Supervisor

060 671 2968

## BEYOND THE SCHOOL WALLS

Schools are often expected, by community members, to provide all the learning a child requires, but we know that “it takes a village to raise a child” and therefore the Centre has been encouraging the active engagement of parents in the lives of their children.

### Supporting parents

The Raphael Centre provided training on parenting skills for the pre-school parents. The course was facilitated by FAMSA. The reason for the course was based on the outcomes of the home visiting that was done in 2013. Often, the reason that children are neglected is because they are looked after by grandparents because the biological parents of these children are teenagers (some are in their early twenties) and they do not know how to care for a child.

From the home visits, we also saw that some parents will regard caring for a child as buying clothes only and not realise that they need to get involved in their lives. For this reason we offered a Parent Involvement workshop that was facilitated by Centre for Social Development based at Rhodes University.



*Parents in a workshop*



*Proud parents with their certificates*

### Partnerships

A Child Protection Action Forum (CPAF) has been established in Grahamstown. NGOs and government departments and the police are all members of the Forum. Child Welfare is leading the process. Child protection policy documents were created by this Forum. The Idea is now to go to the schools and ask the school principals to nominate teachers that will be trained on child abuse – how to recognize it and what to do if a child is abused. The Raphael Centre will help distribute leaflets on child abuse policy to the parents with whom we work. A woman from the Rape Survivor Unit also asked for help to apply for safe home for victims/survivors. She shared with the members of the

Forum that young kids are most often the victims of rape. Government department always have empty promises because they have promised that she can start the safe home and that they will support the Idea, but people around the table warned the woman that government department always promise but never deliver. The next steps are for Child Welfare staff to prepare for the training that will be held in February next year.

Eloxulweni Child and Youth Centre

On Mandela Day, the 18 July, Eloxulweni boys and the Raphael Centre worked together to paint one of the class rooms at the Raphael (Sakhingomso) Pre-school. The paint, donated by a local hardware shop, was arranged by one of our Board members. The school was to provide paint brushes but failed to do so. We made use of the few brushes we had and bits of material to paint. It both fun and worthwhile.



*Painting at the Raphael (Sakhingomso Pre-school)*



## **SUSTAINABILITY**

### **Funding from Cycle to...**

We are sincerely grateful to Cycle to ... and to the Emthonjeni Trust, without which, none of the above would have been possible. We appreciate the relationship which we view as a partnership as the relationship is defined by trust, by a shared good will and a commitment to community development. So Cycle to ..., in particular, this community development begins with our children. It is they who are the next generation and who will lead the way. We are excited about moving beyond the walls of the pre-school because working with families and communities associated with the school context is a move towards an increased impact and therefore also sustainability.

We are also delighted with the partnership which are developing with FAMSA (Family and marriage association of South Africa), Child Welfare, the Eloxulweni Child and Youth Centre and the Centre for Social Development. These partnerships mean that we are able to do so more. We can expand in both breadth and depth. The partnership with Feeding the Self continues and is also strengthening.

### **ABCD training**

Asset Based Community-led Development (ABCD) is all about empowerment, ownership and self-development. All key features in sustainability.

Attached please find two Reports detailing training conducted with both pre-school teachers and with parents.

- v) ABCD Report September 2014
- vi) Overview of ABCD July to September 2014

### **Stella Bell and Lithalethu**



Stella Bell, from Scotland has taken a keen interest in Lithalethu and has been raising funds for Lithalethu to have their own school building so that they can develop a garden and a playground. We are very grateful to her for her efforts.

Below, please see the proposed plan for the new Lithalethu Pre-school. Land has been secured. Please see attachments:

- vii) Fulani oath
- viii) Contract between Lithalethu and Fulani

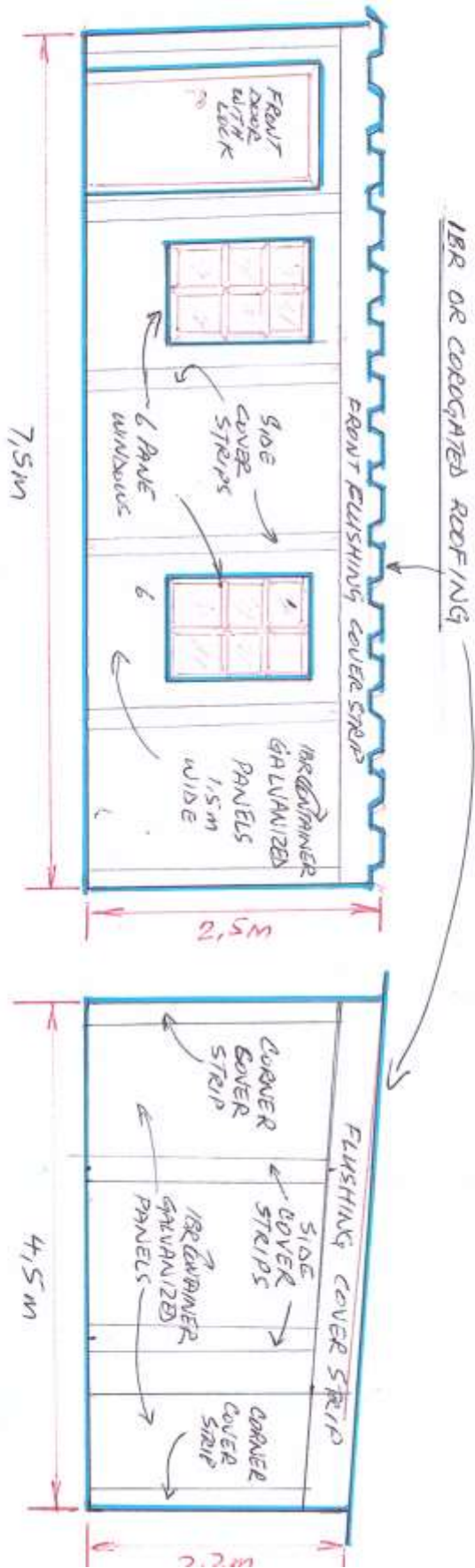


*Land for the new Lithalethu.*

*A toilet bowl and seat as a starting point.*

The Raphael Centre provided a toilet to Lithalethu. Parents and community members built the small bathroom around the toilet. The site has access to water.

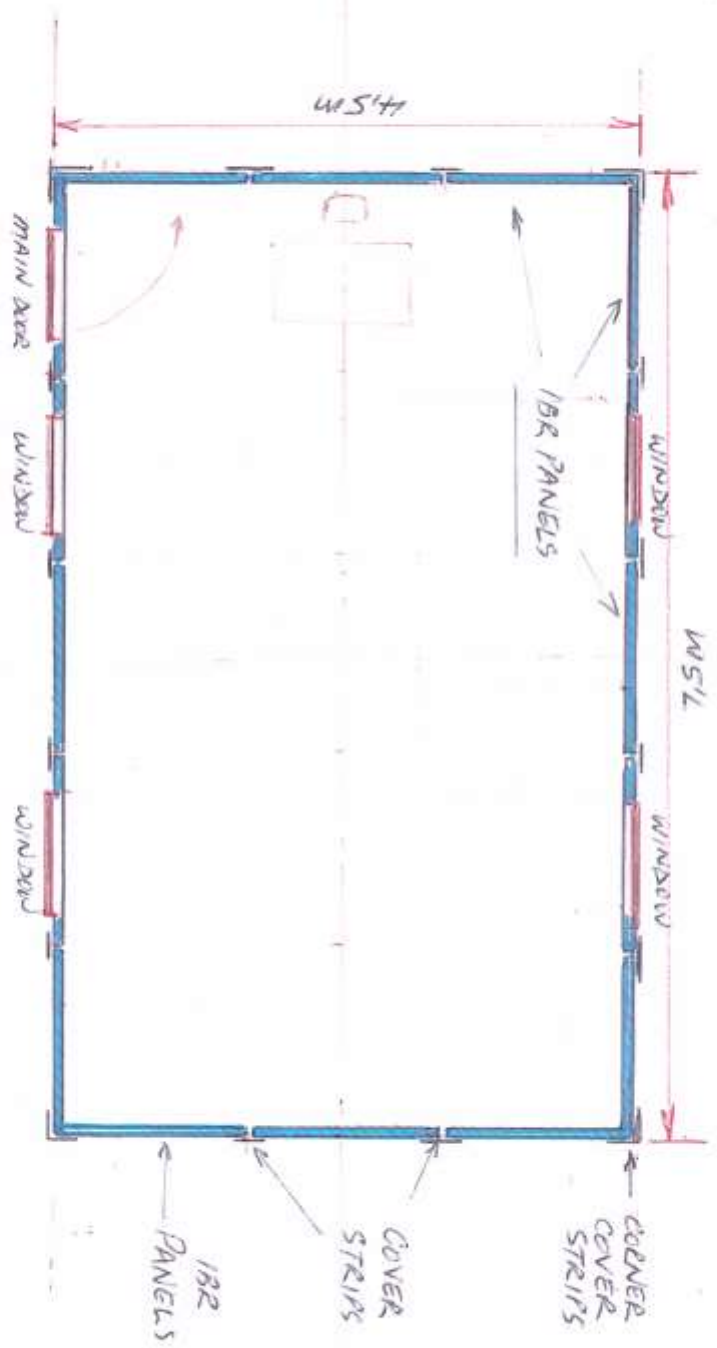
PRE SCHOOL 7.5m x 4.5m MADE WITH  
IBR CONTAINER PANELS FOR  
RAPHAEL CENTRE



FRONT VIEW FOR PRE-SCHOOL

SIDE VIEW





**SECTIONAL TOP VIEW WITH 4 WINDOWS**  
**AND ONE DOOR WITH**  
**ROOFING**

SCALE 1 : 200

## NEW DEVELOPMENTS AND FUTURE PLANS



*Parent review and planning in Joza, Extension 8*

We had parents meeting closing the year to get feedback from them about our programmes and discuss our plans for 2015. We also asked one parent to help us with planning towards the end of 2015 so that they can direct us and also get more involve in their children's lives. Parents reported that they like what we are doing. An aspect of the Raphael Centre work that they appreciated with the slightly older children was mentoring because they feel unable to help their children with homework.

In 2015, the Raphael Centre will be running more training on ABCD with community members. We also plan to focus support on personal and organisational development within pre-schools.



<b><u>Cycle to Cannes Financial for Raphael Pre School January 2013 to December 2013</u></b>	
<b><u>Cycle to Cannes Funding 2013 (£14858.00)</u></b>	<b>224 496.00</b>
<b>Received (£15000.00), September 2014 R170743.00 + December 2014 R83913.00</b>	<b>254 656.00</b>
<b>Less Banking Transfer Fees</b>	<b>1 375.00</b>
<b>Total</b>	<b><u>253 281.00</u></b>
<b><u>Payments</u></b>	
Salaries x 4 Teachers @ R1200.00 for 12 months	57 600.00
Meals x 40 children @ R150.00 per child for 12 months	72 000.00
Fuel for 12 months @ R3000 per month	36 000.00
Part Sal / 30% Ndumi @ R2130.00 for 12 months	25 560.00
Equipment, Furniture, Educational Materials, (T/Shirts, Tracksuits) etc., for 1 year	39 500.00
Part Sal / 30% Driver @ R1410.00 x 12 months	16 920.00
Rent for workshops/training and meetings etc x 10	2 000.00
Administration and communication	3 540.00
<b>TOTAL</b>	<b><u>253 120.00</u></b>
Thank you	
Charlene	
Finance/Admin	